



WILLYAMA HIGH SCHOOL

Connect • Inspire • Excel - Together

Year 7 Information Booklet 2025

Principal : Grant Shepherd
Telephone : (08) 8088 1055
Email : willyama-h.school@det.nsw.edu.au



School Uniform (Years 7-10)

The Junior school uniform is:

- Everyday**
- Green WHS or plain polo shirt
 - Black shorts or track pants
 - Green WHS junior hoodie or plain green jumper
 - Enclosed shoes
- Official**
- Green WHS polo shirt
 - Black trousers or shorts (in boys' and girls' styles)
 - Green WHS junior hoodie
 - Enclosed shoes
- Sport/PE**
- Sports shoes

The official uniform must be worn for official events such as school photographs, presentation night, graduation ceremonies and out of school activities where students are representing Willyama High School.



WHS Official polo shirt



WHS Junior hoodie

Hats

While hats are encouraged in the grounds of the school at recess and lunch time or appropriate lessons, they must not be worn in class.

Footwear

NSW Department of Education & Training Work Health & Safety regulations require all students to wear appropriate enclosed footwear at all times. No Thongs!

Uniform Suppliers

Totally Workwear – 121 Rakow Street

Barossa Knitting Mill – York – Shop 1 Duff Street

Year 7 Subjects

The 58 periods that Year 7 students attend each ten-day cycle cover all Key Learning Areas (KLAs) at Willyama High School and consist of:

- 8 English periods
- 7 Mathematics periods
- 8 Science periods
- 7 HSIE periods
- 6 Chinese periods
- 5 Personal Development, Health and Physical Education (PDHPE) periods
- 4 Sport periods
- 6 Technology Mandatory periods
- 6 Music periods
- 1 Wellbeing lesson

During Term 1 students will also participate in Information & Digital Literacy lessons.

Following are further details about each of these subjects.

Please see the Learning and Behaviour Support section for Support Unit subject organisation.

English

English is compulsory from Years 7 to 12. The following areas provide the basis for activities in Year 7 English:

- Reading
- Writing
- Literature
- Speaking
- Listening
- Representing
- Viewing

The minimum language experience will include:

Reading

- For a variety of purposes
- Of a range of literary and non-literary material
- In a range of contexts

Writing

- For a variety of purposes
- For real, assumed and imagined audiences
- In a range of forms and situations

Speaking

- For a variety of purposes
- To real, assumed and imagined audiences
- In a range of formal and informal situations
- In a variety of roles and relationships

Listening

- For a variety of purposes
- To a range of spoken language
- In many different situations

Viewing

- For a variety of purposes
- Combining visual media such as words and images
- Positioning the viewer to a particular point of view

In the following contexts:

- Everyday communication and personal expression
- Literature: short story, novel, poetry, non-fiction, drama, film
- Mass Media: films, television, video, radio, print (visual literacy)

Assessment in Year 7 English will be continuous and based on work presented as part of class activities with at least three cross-form assessment tasks.

Mathematics

Mathematics is compulsory from Years 7 to 10.

Students will consolidate and extend Mathematical skills and concepts developed in primary school, focusing on developing skills in problem solving, communication and mathematical reasoning.

The Mathematics course is made up of topics from 3 strands, with emphasis on Working Mathematically throughout the 3 strands:

1. Number and Algebra
2. Measurement and Geometry
3. Statistics and Probability

Students will complete both formal and informal assessment tasks throughout the year including bi-weekly knowledge assessments and three major assignments.

Science

Science forms a component of the compulsory curriculum offered to all NSW students in Years 7 to 10.

Year 7 Science at Willyama has been designed to engage you in the subject, as well as to provide the basis upon which sequential units are taught in the following years.

Science units to be taught to Year 7 Willyama High students include the following:

1. Working Scientifically
2. Physics
3. Chemistry
4. Earth and Space
5. Biology

Students will complete at least three (3) formal assessment tasks through the year including first-hand investigations, skills tests and examinations.

Human Society In Its Environment (HSIE)

The course in Year 7 consists of the mandatory Stage 4 Geography and History components which will be taught by semester. The areas of study are:

Semester 1 – Geography

1. **Interconnections** - This topic introduces students to thinking about how our world works. Students investigate how connected people, places, events and ecosystems are and the impacts they have on one another.
2. **Water in the World** - This topic covers all aspects of a vital resource including the water cycle, issues of water uses and shortages, and even threats that water poses through natural hazards.

Semester 2 – History

1. **Investigating the Ancient Past** - This topic introduces students to the content, skills and methods used in History and incorporates studies of Societies and Civilisations of the Past, and Aboriginal and Indigenous Peoples, Colonisation and Contact History.
2. **The Mediterranean World** - This topic covers case studies of Ancient societies in depth. Topics covered could be Egypt, Greece or Rome.
3. **The Asian World** - This topic covers case studies of Ancient societies in depth. Topics covered could be India or China.

Chinese

Students will study Chinese and be involved in reading, listening, speaking and writing on topics including:

- Learning about the History and culture of writing systems and the country of China
- Explore writing in Chinese characters (Hanzi)
- Learning how to count and use Chinese to talk about yourself and others
- Using Hanzi to describe food and other countries

Year 7 students will be engaged in immersive experiences such as food, cultural activities (e.g., games) and technology to explore language and culture.

Through this mandatory study, students will gain an understanding and appreciation of Chinese culture and attain second language skills.

Personal Development, Health and Physical Education (PD/H/PE)

In this Key Learning Area, you will participate in work which will encourage you to lead a healthy lifestyle.

You will study many topics from the following three content strands:

1. Health, Wellbeing and Relationships
2. Movement skill and Performance
3. Healthy, Safe and Active Lifestyles

The course involves a combination of theory and practical work.

Every student is expected to participate in Physical Education unless there are good medical reasons for not doing so.

Physical Education is part of the mandatory curriculum for junior students, so any student who is unable to participate will require a parental note/medical certificate and will complete written work.

If any parents have any concerns regarding the content in any of these areas, they should not hesitate to contact the PD/Health/PE Key Learning Area at the school.

Sport

Every student will participate in four (4) periods of sport each cycle, unless there are good medical reasons for them not to do so.

Students will be given a choice of sports options that will include school based and community-based activities.

Any student who is unable to participate in Sport will require a parental note/medical certificate.

Mandatory Technology

The aim of Mandatory Technology is to develop students' ability to design, produce and evaluate quality solutions that respond to identified opportunities and needs.

It enables students to justify solutions and to responsibly, safely and creatively use and select materials, tools and techniques.

Students learn about technologies and use a range of materials, tools and techniques relevant to the personal, commercial and global areas of human activity.

Technologies studied include:

- Agriculture and Food Technologies
- Engineered Systems
- Material Technologies
- Digital Technologies

Creative and Performing Arts (CAPA)

Music

In Music in Year 7, students will study the concepts of music through the learning experiences of performing, composing, and listening within the context of a range of styles, periods and genres. They will have the opportunity to learn about and play:

- Bass Guitar
- Drums
- Guitar
- Keyboard
- Singing
- Ukulele

Visual Arts

The Visual Arts course at Willyama High School begins in Year 8.

Information & Digital Literacy

The goal of this program is to develop students who are competent self-directed learners, as well as responsible and ethical participants in society. There are three topics that are taught across the year:

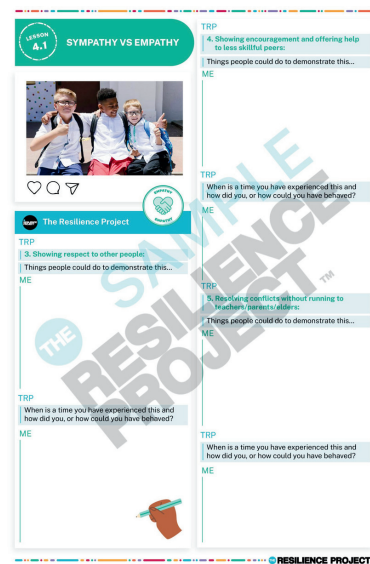
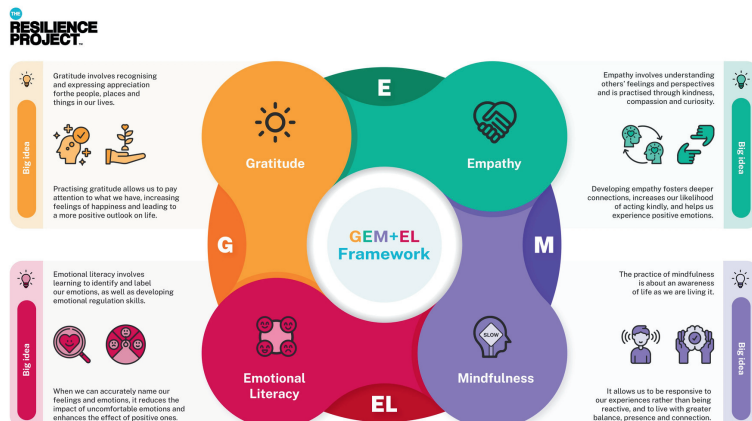
- 1. Digital Skills** - the aim of this module is to provide Year 7 students with the practical digital skills that they will need to successfully navigate learning and assessment requirements at Willyama High. Students will learn how to use their school allocated Windows device and the various Microsoft apps needed for class activities and assessment tasks
- 2. Information Skills** - this module runs over two terms and is designed to teach students the research and information literacy skills they need for education and life.
- 3. Digital Citizenship** - the goal of this module is to promote the ethical and positive use of digital technology at school and at home. There is a particular focus on building familiarity and confidence with the safety and privacy features of the technology used at school and home.

Wellbeing Lessons – The Resilience Project

Developed by educators across Australia, our Secondary Wellbeing Program is evidence-based and tailored to each year level to provide proven impact. Our year advisors deliver these lessons to students in years 7 to 10, once per fortnight.

Centred on The Resilience Project's core principles – Gratitude, Empathy, Mindfulness, and Emotional Literacy – each lesson contains fun & engaging Student Journal activities.

The program takes a whole school approach with materials for students, staff and parents throughout the year. Parents are invited to participate in the Building Resilience at Home for Parents/Carers Webinar on Thursday, 13th March 2025 6:00PM ACST (more information to come).



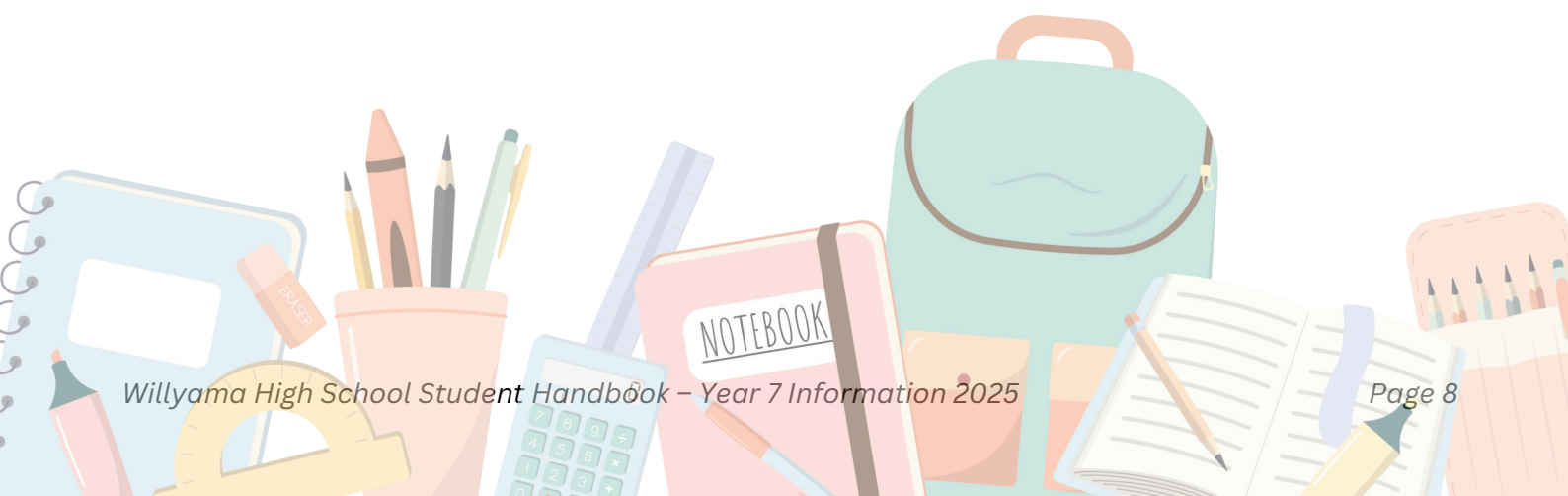
Books and Equipment

In Year 7, students will need the following workbooks and equipment:

Mandatory Technology	1 x 64 page exercise book
English	1 x 240 page exercise book
History	1 x 240 page exercise book
Geography	1 x 240 page exercise book
Chinese	1 x 240 page exercise book
Mathematics	1 x 240 page exercise book 1 x Scientific Calculator (CASIO fx8200AU)
Music	1 x 96 page music manuscript book A folder with plastic sleeves
PD/H/PE	1 x 64 page exercise book
Science	1 x A4 page exercise book (at least 128 pages)

Black pens (2), blue pens (2), red pens (2), 2B pencil (2), pencil sharpener, eraser, 30 cm ruler, glue stick, highlighters, mathematics set (protractor, compass etc)

These items are available in a book pack from Spicers Office Equipment in Argent Street.



Learning and Behaviour Support

There is a range of support offered to students who are experiencing difficulties with their schoolwork at Willyama High School.

Free After School Tutoring (FAST) Centre

The FAST centre is open after school in the School Library (Monday and Wednesday from 3.28 - 5.00pm and offers extra tuition to students in all subjects.

All students are encouraged to take advantage of this opportunity for assistance with assessment tasks and class work in a relaxed and resourceful environment.

Learning Support Team

Students may also be supported through an Individual Learning Plan developed by the Learning Support Team or be involved in intensive work with the Learning and Support Teacher depending on level of need.

Students should feel free to discuss any trouble that they are having with their Year Advisor so that appropriate assistance can be arranged in a timely manner.

Behaviour Support

Students experiencing difficulty with their behaviour will be supported through a range of support strategies at the school which may include engagement programs, behaviour support plans and behaviour support personnel intervention.

Tutorial Centre

In some instances, students may be referred to the Broken Hill Tutorial Centre if they continue to have difficulty with appropriate behaviour at school.

The BHTC is an intensive short-term program designed to support students with behaviour concerns so that they become more engaged and successful in the school environment.

Support Unit

Students accessing the Support Unit will be supported in the core subjects of Science, Mathematics, English and HSIE in the Support Unit classrooms.

Typically, students will be integrated in all other subjects, but this may vary from student to student depending on individual need, or from year to year depending on school organisation and support availability.

Students may receive SLSO support when integrating to assist with a smooth transition and reduce anxiety regarding moving around the school and being in larger classes.

In Year 7, support students will require the following workbooks and equipment:

Mandatory Technology	1 x 64 page exercise book
English	1 x 240 page exercise book
History	1 x 240 page exercise book
Chinese	1 x 156 page exercise book
Mathematics	1 x 240 page exercise book
Music	1 x 96 page manuscript book A folder with plastic sleeves
PD/H/PE	1 x 128 page exercise book
Science	1 x 240 page exercise book
Art	1 x Art Diary

School Library

Library hours:

Monday and Wednesday: 8.30am – 5pm

Tuesday, Thursday, Friday: 8.30am – 3.45pm



The library is also open at recess and lunch.

The aim of the library is to support the development of every student, as a learner and an individual, so that they may reach their full potential. The library's facilities and resources are available for students to meet their academic and recreational needs. The library has a growing collection of resources, both fiction and non-fiction, including information texts, graphic novels and manga, magazines, and an up-to-date range of popular novels to suit all interests, ages and reading levels.

A key purpose for the library is to actively develop important research and information literacy skills. Students have access to Britannica Online and ProQuest, which are e-Libraries containing age-appropriate digital content for all curriculum areas. The Teacher Librarian is also available to assist students with assessment tasks and homework, especially helping students to seek out and evaluate information resources, but also guidance with structuring, drafting and editing written tasks.

Every Monday and Wednesday the library remains open until 5pm for FAST Centre, where qualified teachers are on hand to support students to complete homework or assessment tasks. The library further supports students with their learning activities in more practical ways – by providing access to printing, scanning and photocopying so that completed work can be submitted to the teacher on time.

The library promotes a love of reading for pleasure in a variety of ways. In Year 7 all students will get involved in the Premier's Reading Challenge. Students will develop their reading skills through independent reading, group and guided reading sessions. All students who complete the requirements of the Premier's Reading Challenge, will receive an official certificate or medal.

The library is also a hub for recreational activities. Many students choose to spend recess and lunch breaks in the library, using the computers, playing board games or card games, reading or just talking with friends. The library hosts many school wide events, like Harmony Day, NAIDOC Week celebrations, International Games Week and our most exciting event: Book Week. We also support several student clubs, which will have regular meetings in the library, like Games Club and Book Club.

Students use of Mobile Phones in Schools Management Plan

Willyama High School supports the restrictions of mobile phones in accordance with the NSW Department of Education: Students' Use of Mobile Phones in Schools policy (Digital Devices and Online Services for Students Procedures (nsw.gov.au)).

Mobile phone use in schools can impact student learning and wellbeing. Restricting mobile phone use at school aims to increase focus in classrooms, remove distractions and promote positive social interaction, while reducing the potential for online bullying.

Willyama High School has strong teaching and learning practices to support students in the classroom using various forms of appropriate technology, which maximises the benefits and minimises the risks of digital environments and prepare students for life beyond school. We foster a safe learning environment which supports and enhances each child's social and emotional health through our wellbeing and learning support teams.

Willyama High School has elected to use the following approach. All mobile phones are required to be turned off and placed in a locked Salus pouch for the full school day, including recess and lunch. This will mean that students will have a responsibility to turn off their phone, place it in the locked pouch and store it safely in their school bag for the course of the school day. This is an approved NSW Department of Education option and will limit unnecessary distractions and complement our ongoing approach to ensure every student maximises their learning and social growth in a safe and supportive environment.

Student device policy

All Year 7 – 10 students at our school are allocated a device for use at school. These devices are kept in each individual student's roll call class and are to be checked in and out every day. They need to be put back on charge by the end of the day.

These devices are not to be taken home without permission. It is the student's responsibility to care for and ensure that the device is kept in their possession unless locked in their roll call room.

Students will use the devices in class when their teacher requires them to. Our school uses Microsoft Teams and One Note as a digital classroom platform and all files are to be stored on the cloud rather than locally on the device.

Students will be provided with further information and advice around this at school.

Contributions for Subject Costs

Voluntary School Contribution

With the agreement of the school's community, it is intended to seek from parents and caregivers a Voluntary School Contribution.

Voluntary School Contribution: \$60.00

It is anticipated that the funds raised will be expended on educational resources and programs within the school environment including the cost of subject materials used in mandatory technology.

Our school would welcome your contribution, as this will significantly enhance the resources made available to students.

If parents so desire, contributions may be paid in instalments during first term or by other arrangements as agreed to by the Principal.

Eftpos facilities are available at the front office if required. Payment can also be made online via the School Bytes parent portal (see information on following page).

Methods of Communication

There are several ways to stay informed about what's happening at Willyama High School. Consider joining the school's Facebook page to receive timely updates and important announcements affecting the school community and celebrating student achievement.

You will also have access to the parent portal through the school website, where you will be able to view attendance and reports. Assessment due dates are available on our website through the Sentral assessments calendar. The link to the school calendar is also available on our website. Each year group has a 'Teams' communication channel and each class group also has a Teams channel for the distribution of learning activities, assessments and communication.

If you have any questions or concerns, please feel free to contact Miss Bianca Iannone, Year 7 Advisor 2025, by phoning the school on 8088 1055.

Updating Contact Details

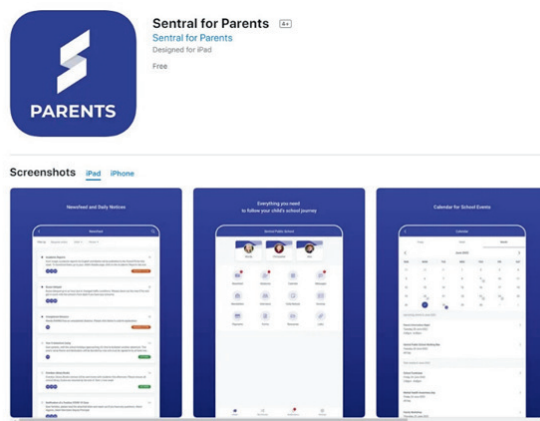
It is important that the school has the most up to date contact information for you, not only in case of emergency, but also if your child's teachers need to contact you about their progress.

School Bytes

Please be aware that our school uses School Bytes to send out permission notes and communication. Please check your emails and your spam folder to make sure you aren't missing out on important information. To set up or login to your parent portal please visit <https://portal.schoolbytes.education/auth/login> School Bytes parent portal can also be used to make payments.

Stay connected with Sentral

At the beginning of 2025 you will receive a letter containing an access key for you to activate your Sentral Parent Portal account. Accessing your parent portal account will allow you to do a number of things like viewing attendance and reports, making a future absence request and viewing the Sentral assessment calendar.



Available on Google Play or the App Store.

Read our information booklets online

Find links to all our information booklets at Willyama-h.schools.gov.au Information about school policies can be found at the 'About our school' section in 'Student Information Handbook Year 7 – 12'.

